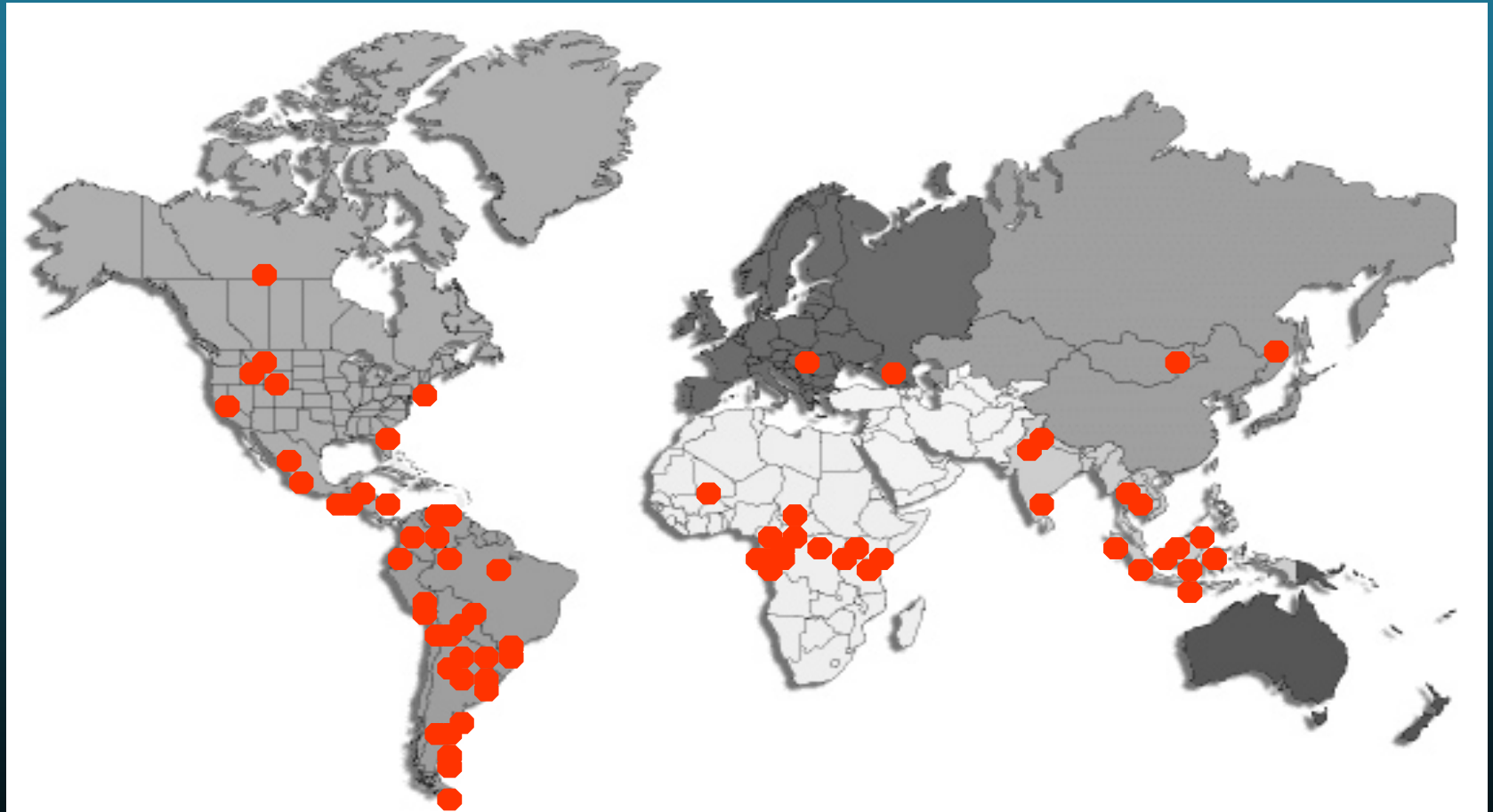
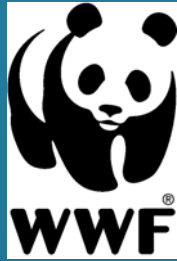




Field Veterinary Program





GABON

CONGO







Salmonella

Viral Diarrhea

Polio

Animals  **Colds**  **People**

Flu

Measles

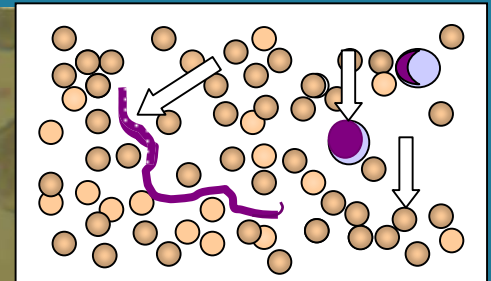
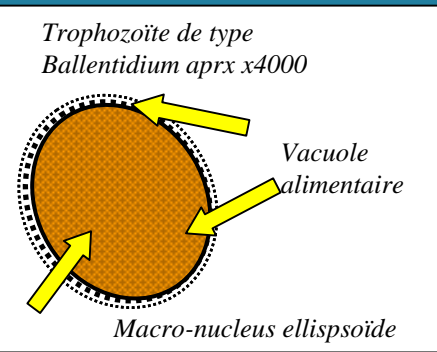
Tuberculosis



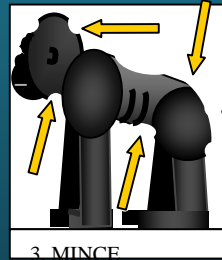
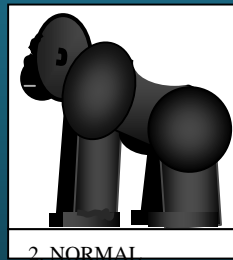
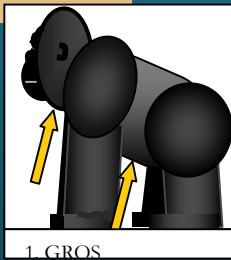


Capacity building





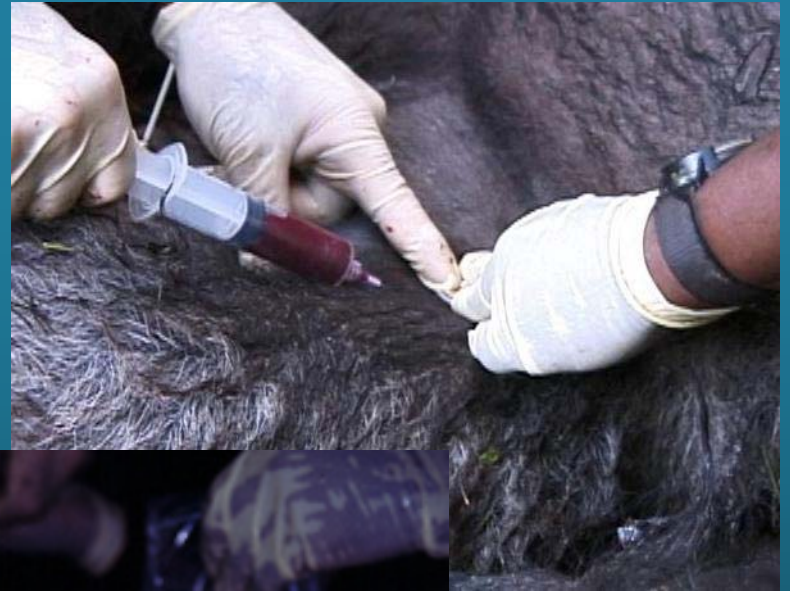
Microfilaire:
Frottis sanguin montrant de longs organismes en filaments et des globules rouges et blancs. Sur un frottis frais ou avec un tube CRT avec couche leucocytaire, on note fréquemment une mobilité.



Nom de l'animal	
Espèce	
N° d'identification	
Date (écrire le mois)	

Observations sanitaires, Collecte, Préservation et Analyse des Échantillons Biologiques

Investigation



Serology - Positives

Herpes Simplex 1

Epstein Barr

Rubella

Hepatitis A

Hepatitis B (sAb)

Treponema

Data suggest animals have **already** been exposed
and have **some** immunity following exposure

Serology - Negatives

Polio

Measles

Ebola

Dengue Fever

Monkey Pox

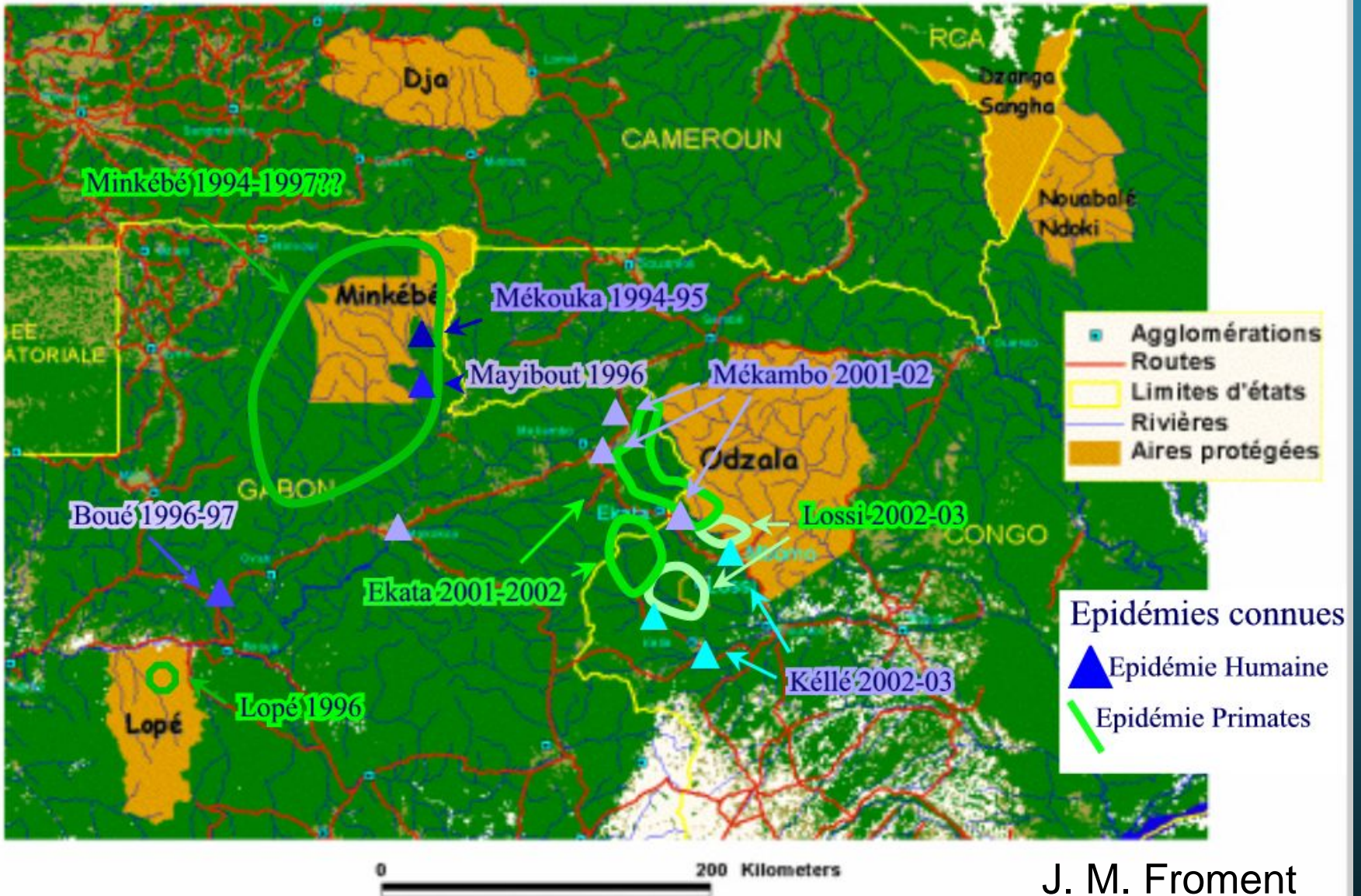
Reovirus

Parvovirus

Data suggest animals have **NOT** been exposed
and have **NO** immunity

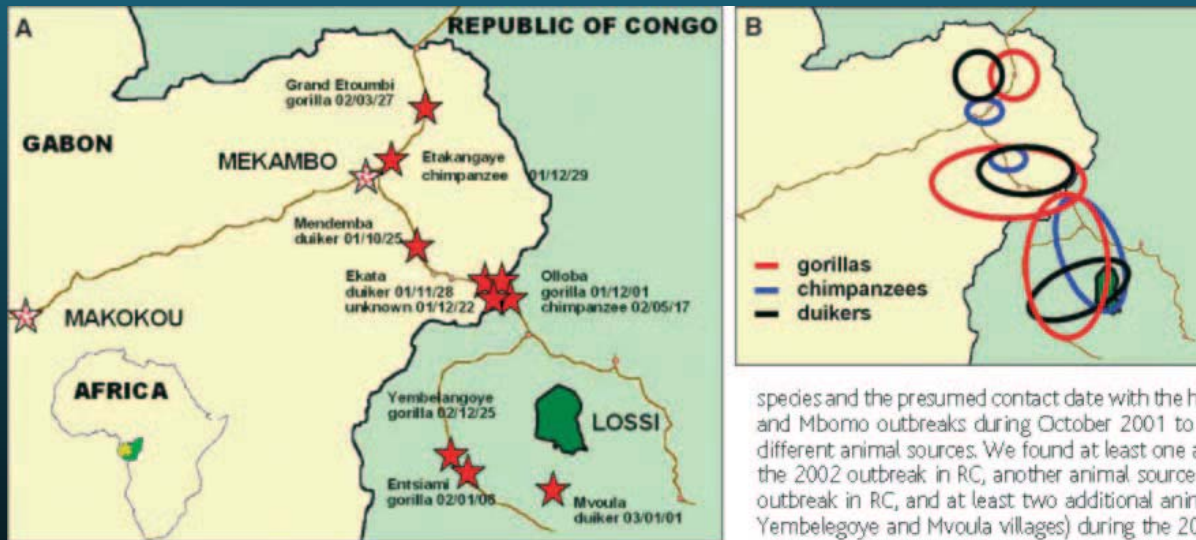


**Disease outbreak
Investigations &
Post-mortem exams**



J. M. Froment

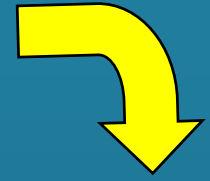
Multiple Ebola Virus Transmission Events and Rapid Decline of Central African Wildlife , Leroy, et al. *SCIENCE*, Jan. 16, 2004



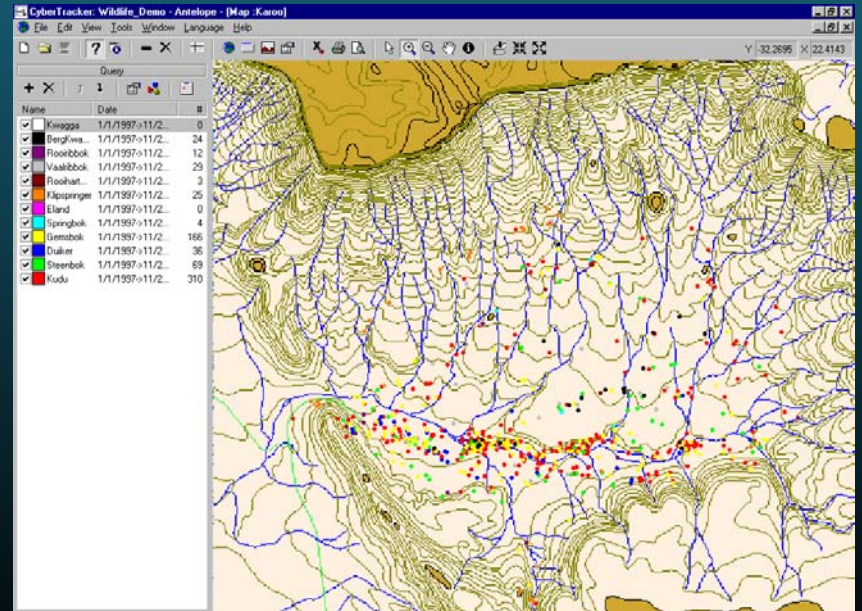
species and the presumed contact date with the human and Mbomo outbreaks during October 2001 to November 2002. We found at least one animal source for the 2002 outbreak in RC, another animal source for the 2001 outbreak in RC, and at least two additional animal sources (Yembelagoye and Mvoula villages) during the 2001 outbreak.



Gorilla health data



Human health data



Ebola

Brucellosis

Animals  **Rabies**  **People**

Salmonella

Monkeypox



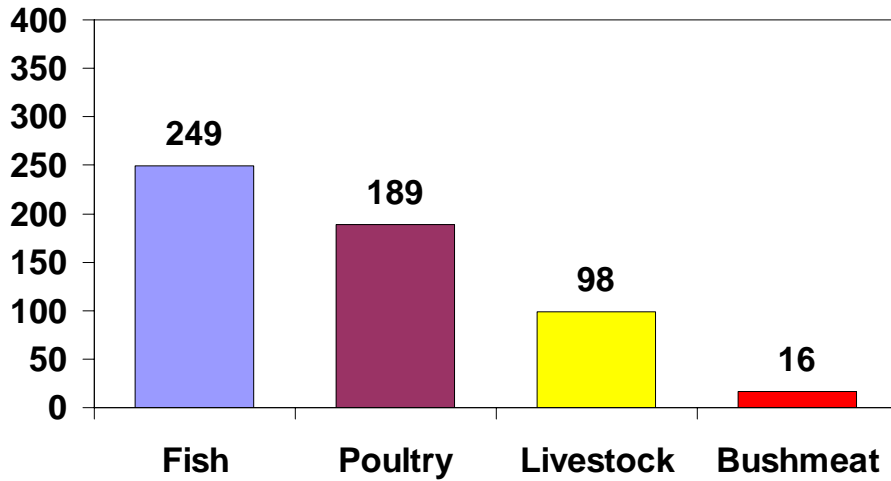


2,000,000,000 Lbs / Year
(Central Africa)

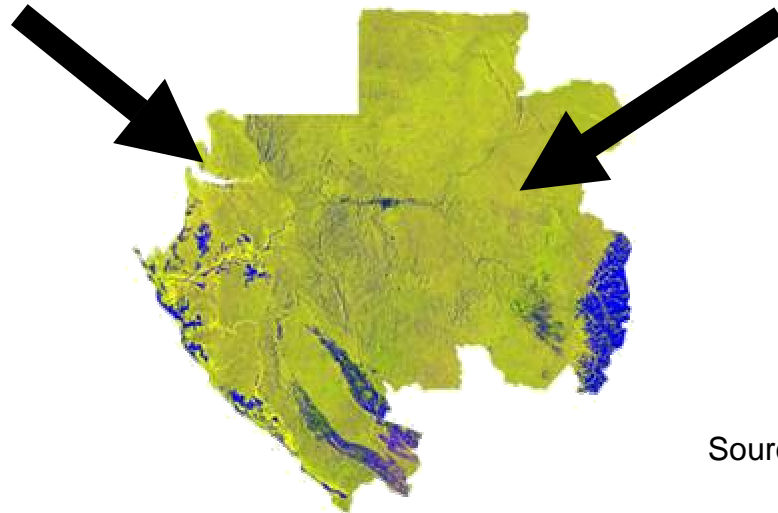
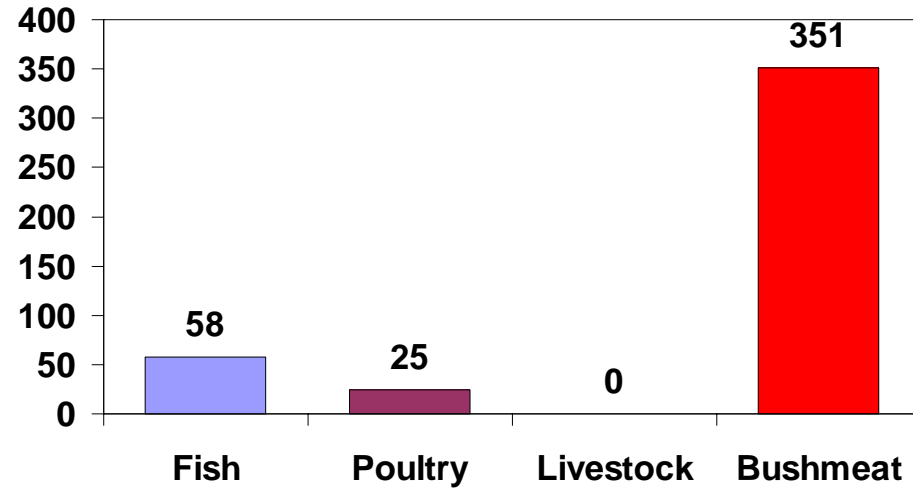


Who eats wildlife?

Libreville

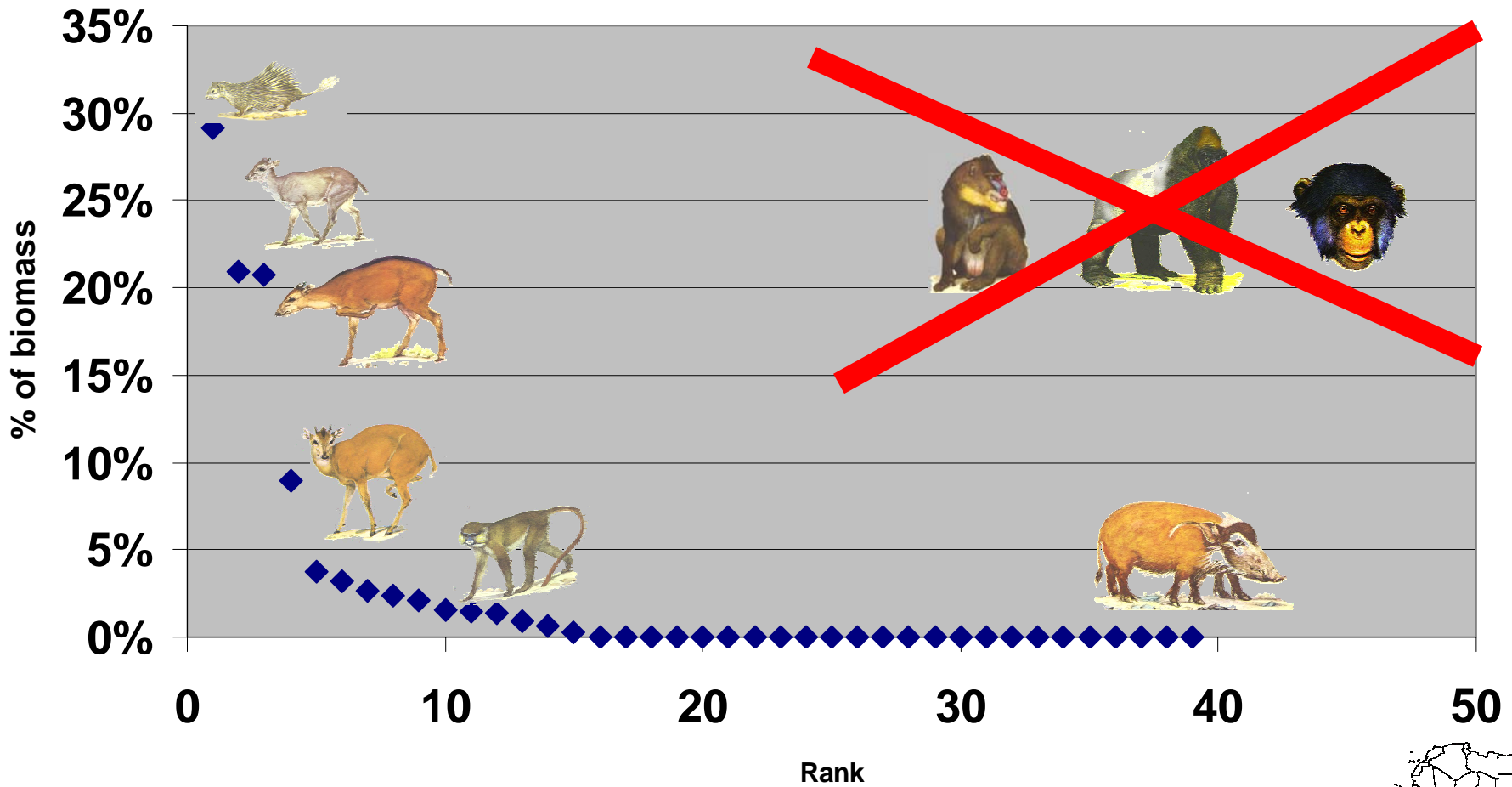


Villages



Source: Abernethy et al, Gabon, National Bushmeat Survey 2/2000-11/2002

Village level hunting

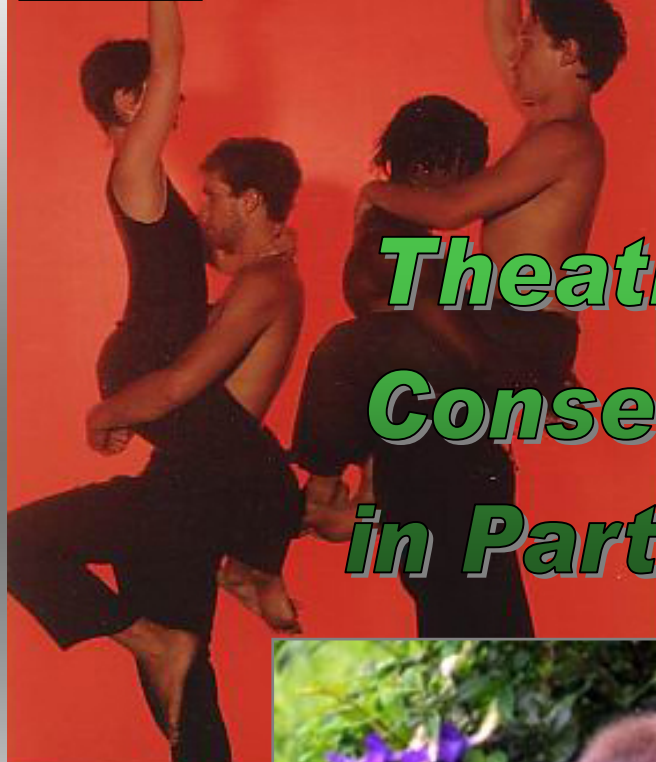
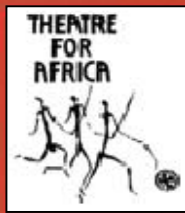


168 households
3,870 sample days

Source: Starkey, in prep







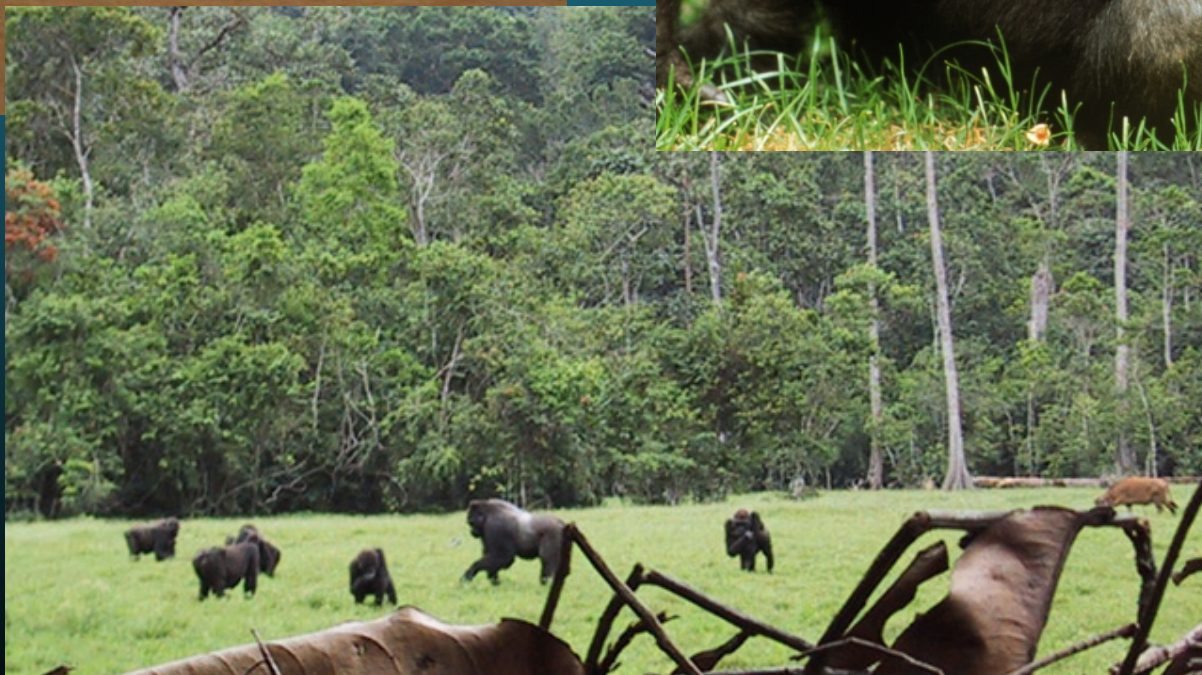
**Healthy
Forests**

**Healthy
People**

Theatre and Conservation in Partnership

**A Proposal by
the Wildlife
Conservation
Society &
Theatre for
Africa**





**Healthy
People**

**Healthy
Animals**